

Dual Float Control, NEMA 4, (Replaces NEMA 3R Pump Control Box)

Features:

The NEMA 4 combination pump and dual float level control has a Watertight enclosure with Manual On-Off switch, circuit breaker with short circuit and overload protection, transformer to reduce line voltage, Two float switches with cable and float override switch for manual operation.

- **ENCLOSURE:** Fiberglass, NEMA 4 Watertight, UL listed. Suitable for both indoor and outdoor use in corrosive environment and is resistant to UV degradation. Fiberglass material has halogen-free and self-extinguishing characteristics
- **CIRCUIT BREAKER:** Thermal magnetic, molded case, for short circuit protection. UL listed, CSA certified, IEC rated.
- **STARTER:** Electromechanical. HP rated and IEC AC-3 rated, inductive current rated switching device. The insulation rating is 600 volts and has 15 million operating cycles mechanical durability
- **OVERLOAD RELAY:** Ambient air compensated class 10 tripping curve device. 600 volts insulating rating
- **SWITCH:** Hand-off-Auto Black plastic, 3 position, 22mm round, Type-XB5, UL listed
- **TRANSFORMER:** For 460 Volt Applications - 460V to 120V Fused primary and secondary
- **FUSE:** Transformer Primary - rejection type, time delay, 600 volts
- **FUSE:** Transformer Secondary - dual element time delay, rated for high inrush circuits, rated for 250 volts
- **CAPACITORS:** Single Phase - Start & Run capacitors as required
- **WIRING:** Color coded, UL listed type MTW or THHN rated for 90° C
- **LEVEL CONTROLS:** Includes two Float switches that are hermetically sealed, single pole, NO (Normally Open) mechanical switch enclosed in a watertight polypropylene casing. Cables are 18/2 type STO, 600 volts, 60°C, UL and CSA listed. Temperature limit is 122°F at 24 PSI. Floats are weighted for stabilization
- Built and Labeled to UL 508A

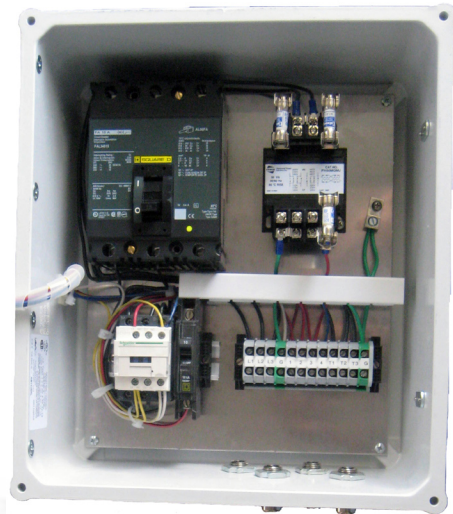
 **WARNING:** CANCER AND REPRODUCTIVE HARM-
WWW.P65WARNINGS.CA.GOV



NEMA 4, Dual Float Level & Pump Controls for Dewatering Pumps

Series: 3/4 Hp to 50Hp

115, 230, 1 Ph
230, 460, 3 Ph



Typical, 3/4 - 50Hp,
230 & 460V 3 Ph, Control



Power-Flo Pumps & Systems

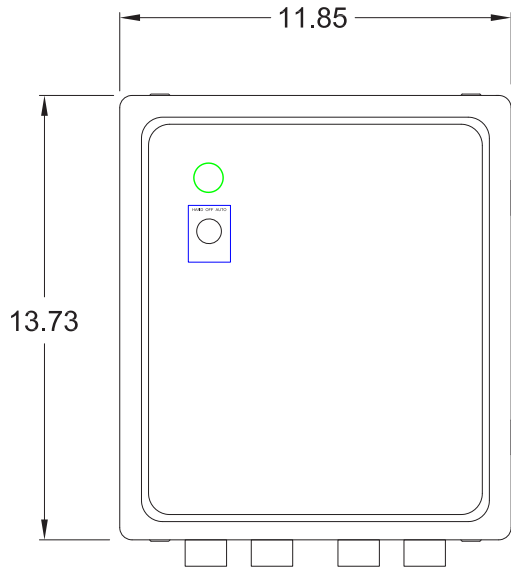
a Power-Flo Technologies company

877-24PUMPS • fax: 516-812-6897 • www.powerflopumps.com

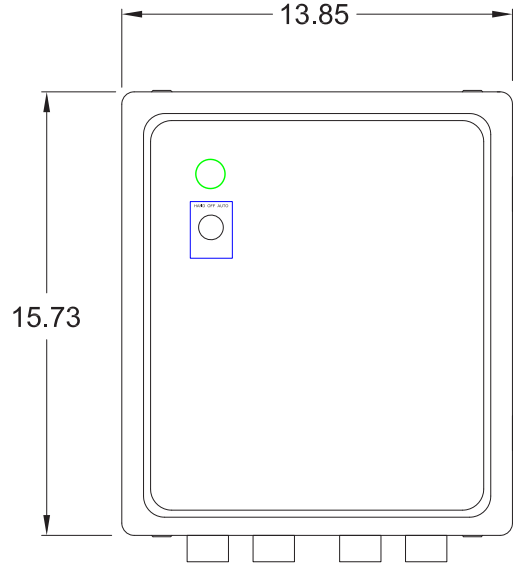
Accessories - Dewatering Pump - Dual Float & Pump Control

Sect.
AC
Page
73
Rev.
02/2021

Dual Float Control, NEMA 4, (Replaces NEMA 3R Pump Control Box)



115 & 230V CONTROLS
12x10x6



460V CONTROLS
14x12x6

PART NUMBER	HP	VOLTS / Phase	PUMP CORD SIZE	CORD LENGTH	FOR PUMP MODEL
V100133	3/4 & 1	115/1	0.570	25 Ft	PF01011, PF01311
V100134	3/4 & 1	230/1	0.570	25 Ft	PF01012, PF01312
V100138	2	115/1	0.650	50 Ft	PF20111
V100139	2	230/1	0.650	50 Ft	PF20112
V100158	2-3/4	230/1	0.650	50 Ft	PF27112
V100143	3-1/2	230/1	0.650	50 Ft	PF35112
V100145	5	230/1	0.650	50 Ft	PF50112
V100146	6	230/1	1.100	50 Ft	PF60112
V100131	3/4 & 1	230/3	0.570	50 Ft	PF01032, PF01332
V100132	3/4 & 1	460/3	0.570	50 Ft	PF01034, PF01334
V100140	2-1/2	230/3	0.650	50 Ft	PF25132HV / HH
V100141	2-1/2	460/3	0.650	50 Ft	PF25134HV / HH
V100144	5 10	230/3 460/3	0.650	50 Ft	PF50132HV, PF50132-2ST, PF81034HV / HH
V101226	5	460/3	0.650	50 Ft	PF50134HV, PF50134-2ST
V100147	10	230/3	1.100	50 Ft	PF81032HV / HH
V100150	15	230/3	1.100	50 Ft	PF81532HV / HH
V100151	15	460/3	0.650	50 Ft	PF81534HV / HH
V100153	25	230/3	1.286	50 Ft	PF82532HV / HH
V100154	25	460/3	1.286	50 Ft	PF82534HV / HH
V100156	50	460/3	1.286	50 Ft	PF85034HV / HH

Dimensions may vary.

Replacement Floats		
Length	ON	OFF
30 Ft	PF30SGMSPDTWE	PF30PMPD1WOP
50 Ft	PF50SGMSPDTWE	PF50PMPD1WOP



Power-Flo Pumps & Systems

a Power-Flo Technologies company

877-24PUMPS • fax: 516-812-6897 • www.powerflopumps.com