

Models: PF125SCV, PF150SCV, PF200SCV

Features:

The design of the Slide Couplings allows the submersible pump to be installed or removed without requiring personnel to enter the wet well.

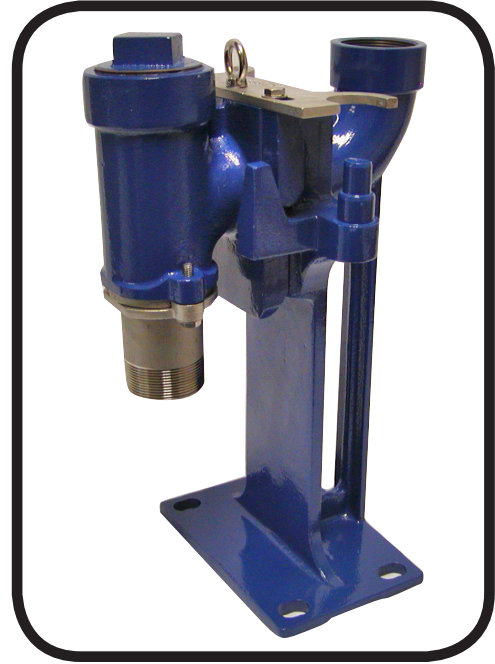
- **DISCHARGE:** 2" NPT, Female, Vertical
- **BASE ELBOW:** Ductile iron
- **PULL-OUT-FLANGE:** Integral Check Valve, Ductile iron
- **LOWER GUIDE PLATE:** Stainless steel
- **PUMP ADAPTER:** Stainless steel, 1-1/4", 1-1/2" or 2" NPT Male
- **HARDWARE:** Stainless steel
- **LIFTING EYE BOLT:** Stainless steel
- **O-RING:** Buna-N
- **PAINT:** Powder Coated
- **UPPER GUIDE PLATE:** Stainless steel
- **GUIDE RAIL PINS:** Will Accept 3/4" and 1.00" Pipe Rails
- **WEIGHT ALLOWANCE:** Max pump weight 200lbs.
- **WARRANTY:** 1 year



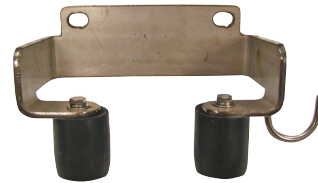
WARNING: CANCER AND REPRODUCTIVE HARM-
WWW.P65WARNINGS.CA.GOV

Assemblies **DO NOT** include Pump, Discharge piping, Guide Rails, Lifting Chain nor Gate Valve and Handle.

NOTE: Not for use with PFGPC or PFG 2 Hp Grinder Pumps.



**Slide Coupling Assembly
with Check Valve and
Upper Guide Rail Bracket**



Stainless Upper Guide Bracket



Power-Flo Pumps & Systems

a Power-Flo Technologies company

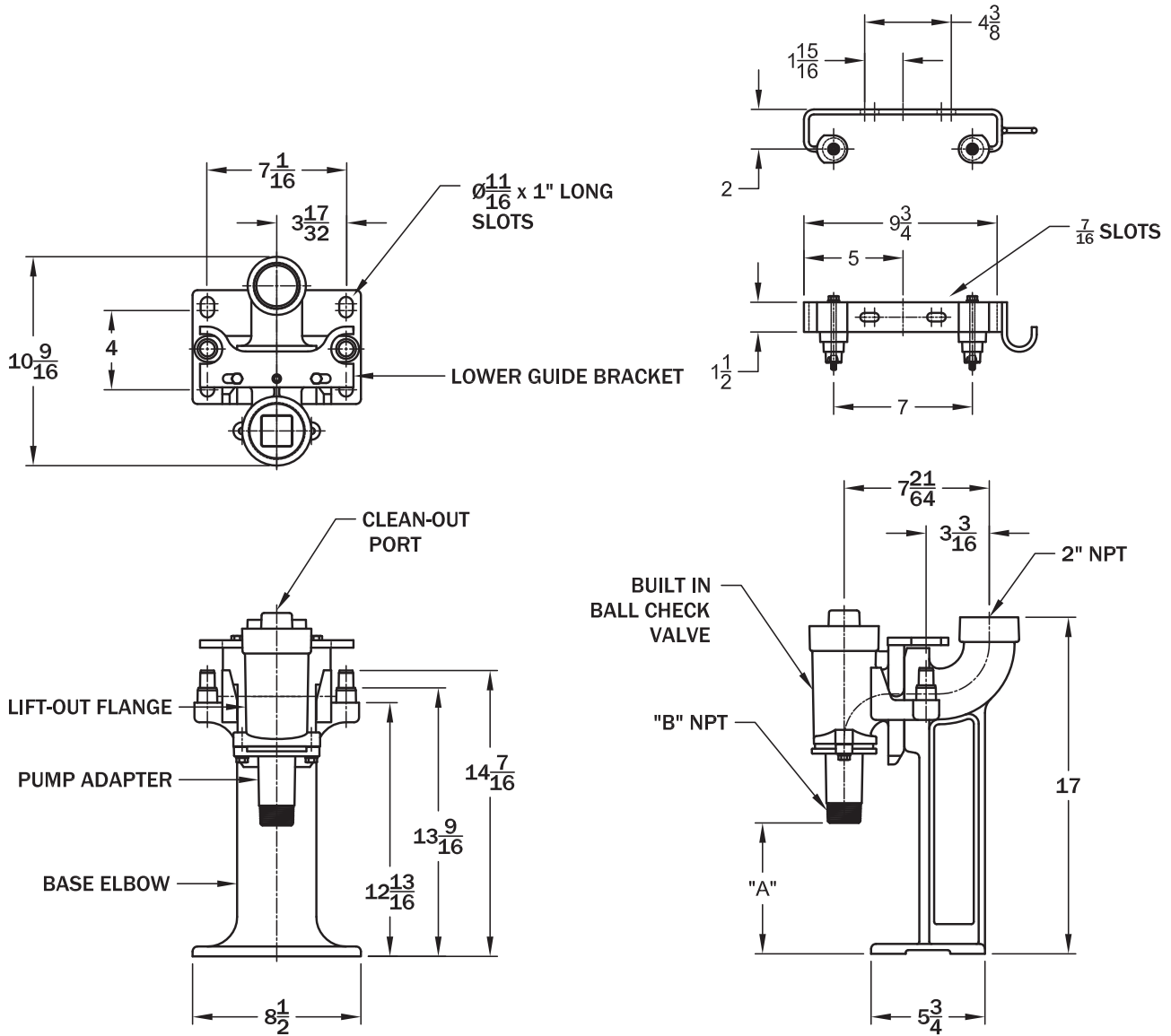
877-24PUMPS • fax: 516-812-6897 • www.powerflopumps.com

Accessories - Slide Couplings - 1-1/4", 1-1/2" & 2" with Check Valve

Sect.
AC
Page
3
Rev.
02/2021

Accessories - Slide Couplings - 1-1/4", 1-1/2" & 2" with Check Valve

Models: PF125SCV, PF150SCV, PF200SCV



MODEL	DIM "A"	SIZE "B"
PF125SCV	6-5/8"	1-1/4"
PF150SCV	7"	1-1/2"
PF200SCV	7-3/8"	2"

