

Models: PF2185, PF2245, PF2305, PF2365, PF2485, PF2605
For Sewage, Effluent, Grinder & Non-Clog Pumps

Features:

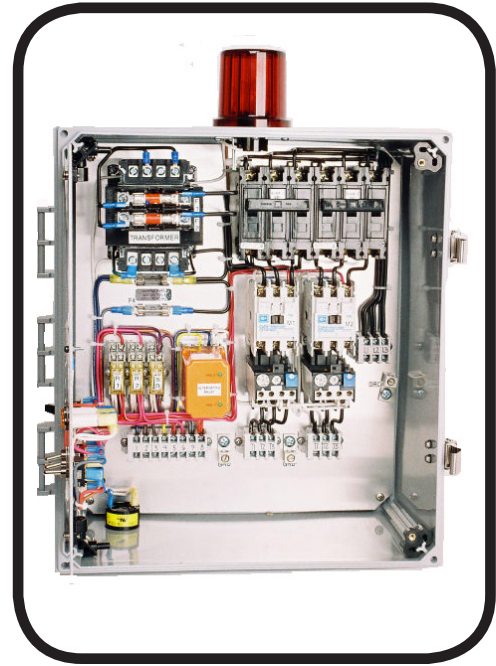
- **ENCLOSURE:** NEMA 4X weather resistant Poly enclosure with stainless door latches w/padlock hasp
- **CIRCUIT BREAKER:** For pump and control circuit
- **CONTACTOR:** IEC
- **OVERLOAD RELAY:** Bimetal type, ambient compensated
- **HEATER ELEMENT:** Class 10 quick trip, one heater for each phase
- **SWITCH:** Pump Hand-off-Auto
- **SWITCH:** External, Test/Normal/Silence with UV resistant sealing boot
- **LIGHT:** Green pump run
- **SUB PLATE:** Switch and light mounting
- **FUSE:** 1 Amp, Control circuit
- **FUSE:** 1 Amp, Alarm circuit
- **TRANSFORMER:** With primary & secondary fuse protection
- **ALTERNATOR:** Automatic
- **TERMINAL STRIP:** Box lugs for customer wiring & ground lugs
- **WIRING:** Color coded internal wiring
- **AUDIBLE ALARM:** Externally mounted 90 db @ 10 Ft. buzzer
- **ALARM LIGHT:** 360 degree red alarm light
- **SEAL LEAK SENSOR*:** Seal leak circuit with indicator light
- **TEMPERATURE SENSOR*:** Motor heat sensor circuit with indicator light
- **LEVEL CONTROL:** Includes Qty. 4, normally open, mechanical, pilot duty, narrow angle, 5 Amp @ 120/240 VAC, Floats with 15 Ft. 16/2, SJOW cords and external weight.

Built and Labeled to UL 508A standard with NEMA 4X rating.
 Consult factory for other available options.
 Some options may require an increase in the enclosure size.

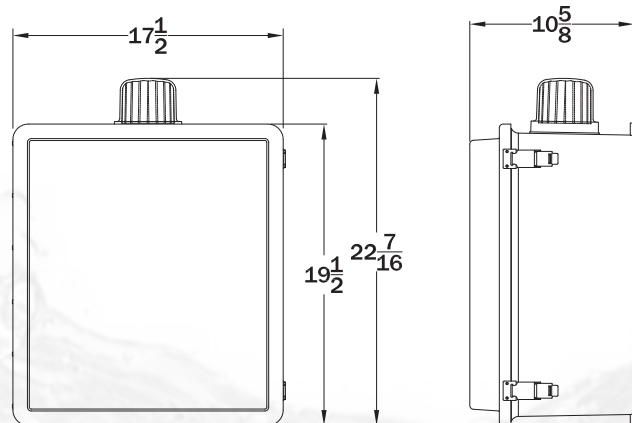
⚠ WARNING: CANCER AND REPRODUCTIVE HARM-
WWW.P65WARNINGS.CA.GOV

HP	VOLTS	MAX AMPS	PART NUMBER
18	460	25	PF2185-ST-25
18	460	25	PF2185-OST-25
18	460	32	PF2185-OST-32
24	460	32	PF2245-OST-32
30	460	65	PF2305-ST-65
30	460	65	PF2305-OST-65
36	460	65	PF2365-OST-65
48	460	65	PF2485-OST-65
60	460	80	PF2605-OST-80

(*) ST = Seal Leak & Motor Thermal Overload Detection
 C = Capacitor Start Components, O = Overload Protection



Control Panel
Duplex, NEMA 4X
Three Phase,
460 Volt



Accessories - Control Panels - Duplex - 460 Volt - 3Ph



Power-Flo Pumps & Systems

a Power-Flo Technologies company

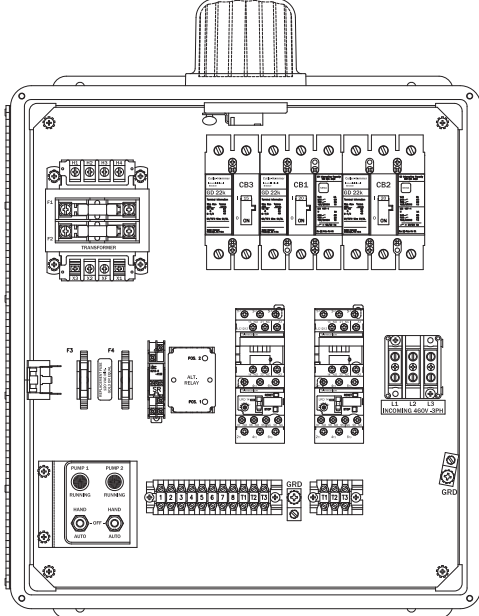
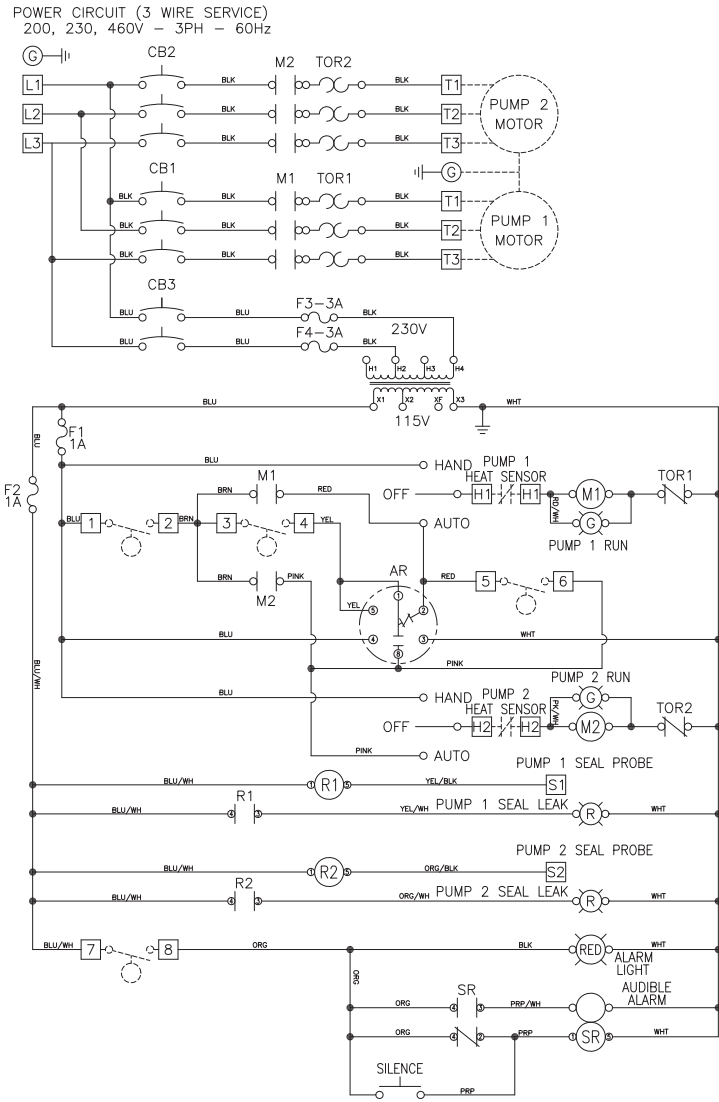
877-24PUMPS • fax: 516-812-6897 • www.powerflopumps.com

Sect.
 AC
 Page
 59
 Rev.
 02/2021

Models: PF2185, PF2245, PF2305, PF2365, PF2485, PF2605
For Sewage, Effluent, Grinder & Non-Clog Pumps

18, 24, 30, 36, 48, 60HP
Standard Panel Schematic

Standard Panel Layout



- NOTES:**
1. Panel shown with Moisture and Temperature sensors (ST)
 2. Panels that are **NOT** indicated with (ST*) do not include Seal Leak and Temperature sensors