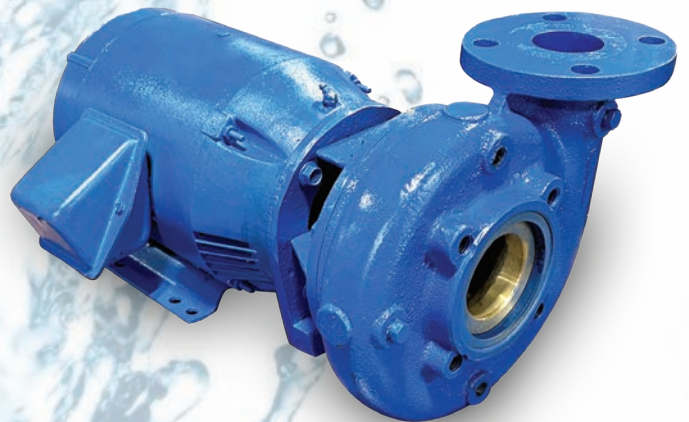




Power-Flo Pumps & Systems

a Power-Flo Technologies company

Wastewater, Commercial & Dewatering Solutions



Power-Flo Pumps & Systems

250 Piper Road

Mansfield, OH 44905

877-24PUMPS • www.powerflopumps.com



CONTENTS

Installer Sump & Sewage Pumps	3
Engineered Effluent Pumps	4
Engineered Sewage Pumps	5-8
Engineered Grinder Pumps	9-10
Water-Feature Pumps	11
Dewatering Pumps	12-13
Self-Priming Pumps	14-15
End Suction Pumps	16
Wet End Kits & Booster Pumps	17
Accessories	18-19
Control Panels	20
Cross Reference Chart	21-26
Solutions	27



Power-Flo Pumps & Systems

a Power-Flo Technologies company

INSTALLER SUMP & SEWAGE PUMPS

Sump Pumps - PFS601 Series

Total Head	Flow GPM	Flow GPH
0'	60	3600
5'	57	3400
10'	50	3000
15'	42	2500
20'	32	1900
25'	17	1000



Models	PFSPPPP3328601M10, PFSPPPP3328601F10, PFSPPPP3328601T10
HP	1/3
RPM	3450
Electrical	115/1
Max Lift	28 Ft
Max Pressure	12.4 psi
Cord Length	10'/20'
Construction	Thermoplastic
Impeller	Thermoplastic
Solids	1/4"
Discharge	1-1/2" NPT Vertical w/1-1/4" Adapter
Automatic Operation <small>(level control type)</small>	T = Wide Angle F = Fixed Vertical

Sump & Effluent Pumps - PFS721 Series

Total Head	Flow GPM	Flow GPH
0'	72	4300
5'	65	3900
10'	58	3500
15'	52	3100
20'	42	2500
25'	28	1700



Models	PFSCPC5030721M10, PFSCPC5030721F10, PFSCPC5030721T10
HP	1/2
RPM	3450
Electrical	115/1
Max Lift	30 Ft
Max Pressure	13.2 psi
Cord Length	10'/20'
Construction	Cast Iron
Impeller	Thermoplastic
Solids	1/4"
Discharge	1-1/2" NPT Vertical w/1-1/4" Adapter
Automatic Operation <small>(level control type)</small>	T = Wide Angle F = Fixed Vertical

Sewage Pumps - PFSW081 & PFSW451/452



Pump Body Cast Iron Construction
Impeller Thermoplastic
Seal 1/2Hp, Lip seal Rubber and Stainless, 3/4Hp, Single, Carbon/Ceramic
Float Mechanical wide angle (T) or Vertical fixed float (F) versions available for automatic operation

Model	HP	Volts/ Ph	RPM	Discharge Size	Max Solids	Cord Length	Max Head	Max GPM
PFSWCPC50181081T10	1/2	115/1	3450	2" NPT	2"	10 Ft	18 Ft.	108
PFSWCPC75201451F10	3/4	115/1	1750	2" NPT	2"	10 Ft.	20 Ft.	145
PFSWCPC75201452F10	3/4	230/1	1750	2" NPT	2"	10 Ft.	20 Ft.	145
PFSWCPC75201451T10	3/4	115/1	1750	2" NPT	2"	10 Ft.	20 Ft.	145
PFSWCPC75201452T10	3/4	230/1	1750	2" NPT	2"	10 Ft.	20 Ft.	145



Power-Flo Pumps & Systems

a Power-Flo Technologies company

ENGINEERED EFFLUENT PUMPS

Effluent Pumps - PFSTEP512 • PFSTEP522

Model	PFSTEP512	PFSTEP522
HP	1/2	1/2
RPM	3450	3450
Electrical	115/1	230/1
FLA	14	7
Shut Off (ft)	80'	80'
Cord Length	20'	20'
Construction	Cast Iron	Cast Iron
Impeller	polypropylene with SS insert	
Discharge	2"	2"



MODEL (gpm)		
Total Head	PFSTEP512	PFSTEP522
5'	76	76
20'	63	63
40'	45	45
60'	24	24
70'	11	11

Effluent Pumps - PFEV512

Model	PFEV512
HP	1/2
RPM	3450
Electrical	115/1
FLA	11
Shut Off (ft)	49'
Cord Length	20'/30'/50'
Construction	Cast Iron
Impeller	Cast Iron
Solids	3/4"
Discharge	2"
Automatic Operation <i>(level control type)</i>	float



MODEL (gpm)	
Total Head	PFEV512
5'	62
10'	58
20'	50
30'	38
35'	30
40'	17
45'	7

Effluent Pumps - PFCEH1024

Model	PFCEH1024
HP	1.0
RPM	3450
Electrical	230/1
FLA	15
Shut Off (ft)	75
Cord Length	29
Construction	Cast Iron
Impeller	Cast Iron
Solids	3/4"
Discharge	3"
Control Panel	PF1013



MODEL (gpm)	
Total Head	PFCEH1024
25'	120
40'	100
50'	80
60	60
70	30
75	0



Power-Flo Pumps & Systems

a Power-Flo Technologies company

ENGINEERED SEWAGE PUMPS

Sewage Pumps - PFS & PFV Series



Pump Body Cast Iron Construction
Impeller Cast Iron, Vortex design on PFV512 and PFS531TW

- Carbon ceramic mechanical seal
- Inboard seal on PFS411/421 and PFV512
- Mechanical wide angle (A) or Vertical float (VF) versions available for automatic operation
- Manual pumps require external control
- * High Temperature model for 200°F applications

MODEL	HP	Volts/ Ph	RPM	Discharge Size	Max Solids	Cord Length	Max Head	Max GPM	Economy Control Panel	
									Simplex	Duplex
PFS411	4/10	115/1	1750	2"	2"	20 ft	25	116	PF100	PF200
PFSE411A	4/10	115/1	1750	2"	2"	20 ft	25	116	N/R	N/R
PFSE411VF	4/10	115/1	1750	2"	2"	20 ft	25	116	N/R	N/R
PFS411HT*	4/10	115/1	1750	2"	2"	15 ft	25	116	PF100	PF200
PFS421	4/10	230/1	1750	2"	2"	20 ft	25	116	PF103	PF203
PFS531TW	1/2	115/1	3450	2"	2"	20 ft	20	62	PF100	PF200
PFS531TWA	1/2	115/1	3450	2"	2"	20 ft	20	62	N/R	N/R
PFS531TWA1	1/2	115/1	3450	2"	2"	20 ft	20	62	N/R	N/R
PFV512	1/2	115/1	3450	2"	2"	20/30 ft	20	90	PF100	PF200
PFV512A	1/2	115/1	3450	2"	2"	20/30 ft	20	90	N/R	N/R
PFV512VF	1/2	115/1	3450	2"	2"	20/30 ft	20	90	N/R	N/R

See page 20 for Standard Panels and options

N/R = Not Required



Power-Flo Pumps & Systems

a Power-Flo Technologies company

ENGINEERED SEWAGE PUMPS

Sewage Pumps - PFSE Series



Pump Body Cast Iron Construction
Impeller 2 Vane open impeller
Solids up to 2-1/2" for raw sewage
Motor Oil filled 1750RPM

- Carbon ceramic seal 1/2 hp thru 1 hp
- Silicon carbide seal 1-1/2 hp thru 3 hp
- Heavy duty design
- Inboard mechanical seal
- 15 Ft cord on 1/2 - 1 Hp
- 25 Ft cord on 1-1/2 - 3 Hp

* High Temperature model for 200°F applications

MODEL	HP	VOLTS/PHASE	DISCHARGE SIZE	MAX SOLIDS	MAX HEAD	MAX GPM	CONTROL PANELS**	
							SIMPLEX	DUPLEX
PFSE51	1/2	115/1	2"	2"	25'	160	PF100	PF200
PFSE51A	1/2	115/1	2"	2"	25'	160	N/R	N/R
PFSE51HT*	1/2	115/1	2"	2"	25'	160	PF100	PF200
PFSE52	1/2	230/1	2"	2"	25'	160	PF103	PF203
PFSE594	1/2	200-230/3	2"	2"	25'	160	PF1004-O	PF2004-O
PFSE544	1/2	460/3	2"	2"	25'	160	PF1005-O	PF2005-O
PFSE774	3/4	200-230/1	2"	2"	30'	190	PF113	PF213
PFSE794	3/4	200-230/3	2"	2"	30'	190	PF1014-O	PF2014-O
PFSE744	3/4	460/3	2"	2"	30'	190	PF1015-O	PF2015-O
PFCSE1074	1	200-230/1	2"	2"	38'	220	PF113	PF213
PFCSE1094	1	200-230/3	2"	2"	38'	220	PF1014-O	PF2014-O
PFCSE1044	1	460/3	2"	2"	38'	220	PF1015-O	PF2015-O
PFCSE1524	1-1/2	230/1	3"	2-1/2"	41'	375	PF1023	PF2023
PFCSE1594	1-1/2	230/3	3"	2-1/2"	41'	375	PF1024-O	PF2024-O
PFCSE1544	1-1/2	460/3	3"	2-1/2"	41'	375	PF1025-O	PF2025-O
PFCSE2024	2	230/1	3"	2-1/2"	52'	410	PF1023	PF2023
PFCSE2094	2	230/3	3"	2-1/2"	52'	410	PF1024-O-20	PF2024-O-20
PFCSE2044	2	460/3	3"	2-1/2"	52'	410	PF1025-O	PF2025-O
PFCSE3024	3	230/1	3"	2-1/2"	65'	435	PF1033-40	PF2033-40
PFCSE3094	3	230/3	3"	2-1/2"	65'	435	PF1034-O-20	PF2034-O-20
PFCSE3044	3	460/3	3"	2-1/2"	65'	435	PF1035-O	PF2035-O

(**) PF + 3 digit number is Economy Panel, PF + 4 digit number is Standard Panel

See page 20 for Standard Panels and options

N/R = Not Required



Power-Flo Pumps & Systems

a Power-Flo Technologies company

ENGINEERED SEWAGE PUMPS

High Head Sewage Pumps - PFCSEH Series



Pump Body Cast Iron Construction
Impeller 2 Vane semi open impeller
Solids Mild Solids Handling Design up to 1-1/2" for stormwater, effluent and raw sewage
Motor Oil filled 3450RPM

MODEL	HP	VOLT/PH	RPM	FLA	MAX GPM	MAX HEAD	MAX SOLIDS	CONTROL PANELS**	
PFCSEH2094	2.0	230/3	3450	14	160	78	1-1/2"	PF1024-O-20	PF2024-O-20
PFCSEH2044	2.0	460/3	3450	7	160	78	1-1/2"	PF1025-O	PF2025-O
PFCSEH3094	3.0	230/3	3450	16.4	180	98	1-1/2"	PF1034-O-20	PF2034-O-20
PFCSEH3044	3.0	460/3	3450	8.2	180	98	1-1/2"	PF1035-O	PF2035-O

Bladeless High Head Sewage Pumps



Pump Body Cast Iron
Impeller Bladeless Mono-Vane for stringy solids and trouble lift stations
High Head Designed for low flow high head applications
Motor Oil Filled 3450RPM with pressed fit stators
 30' Cords

MODEL	HP	VOLT/PH	RPM	FLA	MAX GPM	MAX HEAD	MAX SOLIDS	CONTROL PANELS**	
PFSEB15	1.5	230V/1 & 208-230-460V/3	3450	12.8/7.7/7.0/3.5	275	60	2"	PF1023	PF2023
PFSEB20	2.0	230V/1 & 208-230-460V/3	3450	13.1/8.5/7.7/3.9	310	70	2"	PF1024	PF2024
PFSEB30	3.0	208-230-460/3	3450	10.4/9.0/4.5	325	90	2"	PF1034	PF2034



Power-Flo Pumps & Systems

a Power-Flo Technologies company

ENGINEERED SEWAGE PUMPS

Solids Handling Pumps - PF4NC/PF6NC Series



Pump Body Cast Iron Construction
Impeller Open type impeller

- Overtemp protection
- Dual seals on all models
- Moisture & temperature sensors
- Oil filled motors
- 30 Ft cords
- 1750RPM & 1150RPM

MODEL	HP	VOLTS/ PHASE	FLA	DISCHARGE SIZE	MAX SOLIDS	MAX HEAD	MAX GPM	CONTROL PANELS	
								SIMPLEX	DUPLEX
PFC4NC4524	4.5	230/1	26	4"	3"	40'	600	PF1053NC-COST-40	PF2053NC-COST-40
PFC4NC4534	4.5	230/3	17.6	4"	3"	40'	600	PF1054-OST-20	PF2054-OST-20
PFC4NC4544	4.5	460/3	8.8	4"	3"	40'	600	PF1055-OST	PF2055-OST
PFC4NC4564	4.5	208/3	20.9	4"	3"	40'	600	PF1052-OST-25	PF2052-OST-25
PFC4NC7534	7.5	230/3	23.6	4"	3"	50'	700	PF1084-OST-25	PF2084-OST-25
PFC4NC7544	7.5	460/3	11.8	4"	3"	50'	700	PF1085-OST-20	PF2085-OST-20
PFC4NC7564	7.5	208/3	30.8	4"	3"	50'	700	PF1082-OST-32	PF2082-OST-32
PFC4NC11334	11.3	230/3	28.4	4"	3"	70'	875	PF1124-OST-32	PF2124-OST-32
PFC4NC11344	11.3	460/3	14.2	4"	3"	70'	875	PF1125-OST-20	PF2125-OST-20
PFC4NC11364	11.3	208/3	32.2	4"	3"	70'	875	PF1122-OST-65	PF2122-OST-65
PFC4NC15034	15	230/3	40	4"	3"	80'	925	PF1154-OST-65	PF2154-OST-65
PFC4NC15044	15	460/3	20	4"	3"	80'	925	PF1155-OST-20	PF2155-OST-20
PFC6NC18034	18	230 V	50.6	6"	3"	80'	1200	PF1184-OST-65	PF2184-OST-65
PFC6NC18044	18	460 V	25.3	6"	3"	80'	1200	PF1185-OST-32	PF2185-OST-32
PFC6NC24034	24	230 V	62.8	6"	3"	115	1500	PF1244-OST-65	PF2244-OST-65
PFC6NC24044	24	460 V	31.4	6"	3"	115	1500	PF1245-OST-32	PF2245-OST-32
PFC6NC30034	30	230V	75.8	6"	3"	125	1600	PF1304-OST-80	PF2304-OST-80
PFC6NC30044	30	460V	37.9	6"	3"	125	1600	PF1305-OST-65	PF2305-OST-65
PFC6NC36034	36	230V	90	6"	3"	160	1650	PF1364-OST-95	PF2364-OST-95
PFC6NC36044	36	460V	45	6"	3"	160	1650	PF1365-OST-65	PF2365-OST-65
PFC6NC48044	48	460V	65	6"	3"	175	1800	PF1485-OST-65	PF2485-OST-65
PFC6NC60044	60	460V	78	6"	3"	220	2000	PF1605-OST-80	PF2605-OST-80

See page 20 for Standard Panels and options



Power-Flo Pumps & Systems

a Power-Flo Technologies company

ENGINEERED GRINDER PUMPS

Grinder Pumps - PFG Series



Pump Body Cast Iron Construction
Impeller 2Hp Bronze, 3, 5, 7.5Hp Cast Iron
Cutter Blades Hardened SS cutter & shredding ring

- Carbon ceramic seals on 2HP
- Silicon carbide seal on 3, 5 & 7.5HP models
- 2HP offers dual seal with oil filled seal chamber
- External capacitors on single phase
- 20 Ft cords on 2 Hp and 30 Ft on 3, 5 & 7.5 Hp
- Pumps are oil filled

MODEL	HP	VOLTS/ PHASE	DISCHARGE SIZE	MAX HEAD	MAX GPM	CONTROL PANELS	
						SIMPLEX	DUPLEX
PFG2002HV	2	200/1	1-1/4"	100	58	PF1021-C	PF2021-C
PFG2022HV	2	230/1	1-1/4"	100	58	PF1023-C	PF2023-C
PFG2062HV	2	200/3	1-1/4"	100	58	PF1022-O	PF2022-O
PFG2032HV	2	230/3	1-1/4"	100	58	PF1024-O	PF2024-O
PFG2042HV	2	460/3	1-1/4"	100	58	PF1025-O	PF2025-O
PFG2002HH	2	200/1	1-1/4"	125	30	PF1021-C	PF2021-C
PFG2022HH	2	230/1	1-1/4"	125	30	PF1023-C	PF2023-C
PFG2032HH	2	230/3	1-1/4"	125	30	PF1024-O	PF2024-O
PFG2062HH	2	200/3	1-1/4"	125	30	PF1022-O	PF2022-O
PFG2042HH	2	460/3	1-1/4"	125	30	PF1025-O	PF2025-O
PFG3022	3	230/1	1-1/4"	100	103	PF1053-COST-40	PF2053-COST-40
PFCG3032	3	230/1	1-1/4"	100	103	PF1034-OST-20	PF2034-OST-20
PFCG3042	3	230/1	1-1/4"	100	103	PF1035-OST	PF2035-OST
PFG5022	5	230/1	2"	130	103	PF1053-COST-40	PF2053-COST-40
PFCG5032	5	230/3	2"	130	103	PF1054-OST-25	PF2054-OST-25
PFCG5042	5	460/3	2"	130	103	PF1055-OST	PF2055-OST
PFCG7532	7.5	230/3	2"	136	103	PF1084-OST-25	PF2084-OST-25
PFCG7542	7.5	460/3	2"	136	103	PF1085-OST-20	PF2085-OST-20

See page 20 for Standard Panels and options



Power-Flo Pumps & Systems

a Power-Flo Technologies company

ENGINEERED GRINDER PUMPS

Automatic Grinder Pumps - PFG Series



Pump Body Cast Iron, Class 30 Construction
Impeller 10 Vane, Vortex with pump out vanes on back side, Dynamically balanced, ISO G6.3, Cast Iron
Shredding Ring & Cutter Hardened Stainless Steel
 Dual Seal Design Internal Capacitors

MODEL	HP	Hz	VOLT/PH	RPM	FULL LOAD AMPS	LOCKED ROTOR AMPS	NEMA START CODE	CORD TYPE	CORD SIZE
PFG200-21	2	60	230/1	3450	15.0	53.0	H	SJOW	14/3
PFG200-21P	2	60	230/1	3450	15.0	53.8	H	SJOW	14/3

Grinder/Sewage Pump Package Systems

- Grinder and Sewage packages are available in built to order fiberglass basins
- Simplex and duplex pumps and controls
- Rail Systems can be supplied for ease of installation and servicing
- SupplyPro Low Pressure grinder pump packages are stock and available in standard 24"x48", 24"x60" & 24"x72" sizes

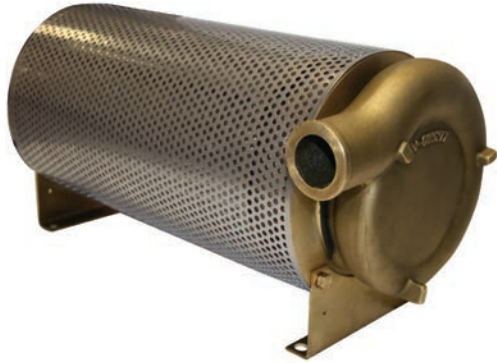


Power-Flo Pumps & Systems

a Power-Flo Technologies company

WATER-FEATURE PUMPS

Water-Feature Pumps - PFU Series



Features:

- Vacuum pressure impregnated "VPI" Sealed Insulation System, Class H motors
- Carbon Ceramic seal
- 1-3/4" Hose connection & 1" NPTF on 1/3HP - 1HP
- 2" Hose connection & 1-1/4" NPTF on 1-1/2HP & 2HP
- Single row ball bearings, both ends

Model	PFU31	PFU51	PFU71	PFU102	PFU152	PFU202	MODEL (gpm)						
HP	1/3	1/2	3/4	1	1-1/2	2	Total Head	PFU31	PFU51	PFU71	PFU102	PFU152	PFU202
RPM	3450	3450	3450	3450	3450	3450	10'	62	76	94	100	112	126
Electrical	115v 1ph	115v 1ph	115v 1ph	230v 1ph	230v 1ph	230v 1ph	20'	44	62	84	92	100	113
Shut Off (ft)	34'	42'	50'	55'	60'	68'	30'	20	43	68	76	86	100
Cord Length	12'	12'	12'	12'	12'	12'	40'	-	16	43	54	66	80
Construction	Brass/SS	Brass/SS	Brass/SS	Brass/SS	Brass/SS	Brass/SS	50'	-	-	-	24	38	59
Discharge Hose Con. FNPT	1-3/4" 1"	1-3/4" 1"	1-3/4" 1"	1-3/4" 1"	2" 1-1/4"	2" 1-1/4"	60'	-	-	-	-	-	30



Power-Flo Pumps & Systems

a Power-Flo Technologies company

DEWATERING PUMPS

Dewatering Pumps - PF Series



Pump Body	Aluminum hard anodized construction
Impeller	Hardened 17-4 stainless impeller 2HP and above

- Silicon carbide outer seal
- Vacuum pressure impregnated, Class H motor
- Replaceable wear plate
- NEMA 3R control box, Optional NEMA 4 box or Dual Float control
- ** Includes internal capacitors, 65ft cord w/plug, Lift rope, female Camlock discharge fitting

Model	Motor HP	RPM	Electrical	Shut Off Head (ft)	Max Flow GPM	Discharge
PF01011	3/4	3450	115/1	41'	100	2"
PF01034	3/4	3450	460/3	41'	100	2"
PF01012	3/4	3450	230/1	41'	100	2"
PF01032	3/4	3450	230/3	41'	100	2"
PF01311	1	3450	115/1	43'	120	2"
PF01311A	1	3450	115/1	46'	120	2"
PF01311SCV **	1	3450	115/1	46'	120	2"
PF01312	1	3450	230/1	43'	120	2"
PF01332	1	3450	230/3	43'	120	2"
PF01334	1	3450	460/3	43'	120	2"
PF20111	2	3450	115/1	76'	175	2" & 3"
PF20112	2	3450	230/1	76'	175	2" & 3"
PF25132HH	2-1/2	3450	230/3	88'	150	2" & 3"
PF25132HV	2-1/2	3450	230/3	50'	300	2" & 3"
PF25134HH	2-1/2	3450	460/3	88'	150	2" & 3"
PF25134HV	2-1/2	3450	460/3	50'	300	2" & 3"
PF27112	2-3/4	3450	230/1	50'	300	2" & 3"
PF35112	3-1/2	3450	230/1	78'	250	2" & 3"
PF35112	5	3450	230/1	91'	300	2" & 3"
PF50132HV	5	3450	230/3	91'	300	2" & 3"
PF50134HV	5	3450	460/3	91'	300	2" & 3"
PF50132-2ST	5	3450	230/3	175'	185	2" & 3"
PF50134-2ST	5	3450	460/3	175'	185	2" & 3"



Power-Flo Pumps & Systems

a Power-Flo Technologies company

DEWATERING PUMPS

Dewatering Pumps - PF Series

- Silicon carbide outer seal
- Vacuum pressure impregnated, Class H motor
- Replaceable wear plate
- NEMA 3R control box, Optional NEMA 4 box or Dual Float control
- ** Includes internal capacitors, 65ft cord w/plug, Lift rope, female Camlock discharge fitting

Pump Body	Aluminum hard anodized construction
Impeller	Hardened 17-4 stainless impeller 2HP and above

Model	Motor HP	RPM	Electrical	Shut Off Head (ft)	Max Flow GPM	Discharge
PF60112	6	3450	230/1	80"	450	4"
PF81032HH	10	3450	230/3	165'	450	4"
PF81032HV	10	3450	230/3	104'	605	4"
PF81034HH	10	3450	460/3	165'	450	4"
PF81034HV	10	3450	460/3	104'	605	4"
PF81532HH	15	3450	230/3	200'	600	4"
PF81532HV	15	3450	230/3	130'	800	4"
PF81534HH	15	3450	460/3	200'	600	4"
PF81534HV	15	3450	460/3	130'	800	4"
PF82532HH	25	3450	230/3	230'	800	6"
PF82532HV	25	3450	230/3	160'	1000	6"
PF82534HH	25	3450	460/3	230'	800	6"
PF82534HV	25	3450	460/3	160'	1000	6"
PF85034HH	50	3450	460/3	245'	1025	6"
PF85034HV	50	3450	460/3	190'	1425	6"



Power-Flo Pumps & Systems

a Power-Flo Technologies company

SELF PRIMING PUMPS

Close Coupled Pumps - PFCCE Series



Features:

- Tri-Voltage 208-230/460, 3 Phase ODP & TEFC motors. 1 Phase Voltage 115/230 or 230, ODP & TEFC motors
- Class 30 cast iron construction, stainless steel hardware and shaft
- Neoprene flap valve
- Bronze impeller & volute available

MODEL	HP	MOTOR ENCLOSURE	VOLTAGE PHASE	SIZE Suction & Disch.	MAX FLOW GPM	SHUT OFF HEAD
PF3CCE1	1-1/2	ODP	115/230, 1Ph	1-1/2" x 1-1/2"	95	87
PF3CCE1-T	1-1/2	TEFC	115/230, 1Ph	1-1/2" x 1-1/2"	95	87
PF3CCE3	1-1/2	ODP	208-230/460, 3Ph	1-1/2" x 1-1/2"	95	87
PF3CCE3-T	1-1/2	TEFC	208-230/460, 3Ph	1-1/2" x 1-1/2"	95	87
PF4CCE1	2	ODP	115/230, 1Ph	1-1/2" x 1-1/2"	105	96
PF4CCE1-T	2	TEFC	115/230, 1Ph	1-1/2" x 1-1/2"	105	96
PF4CCE3	2	ODP	208-230/460, 3Ph	1-1/2" x 1-1/2"	105	96
PF4CCE3-T	2	TEFC	208-230/460, 3Ph	1-1/2" x 1-1/2"	105	96
PF5CCE1	3	ODP	115/230, 1Ph	1-1/2" x 1-1/2"	130	110
PF5CCE1-T	3	TEFC	115/230, 1Ph	1-1/2" x 1-1/2"	130	110
PF5CCE3	3	ODP	208-230/460, 3Ph	1-1/2" x 1-1/2"	130	110
PF5CCE3-T	3	TEFC	208-230/460, 3Ph	1-1/2" x 1-1/2"	130	110
PF10CCE1	5	ODP	230, 1Ph	2" x 2"	195	126
PF10CCE1-T	5	TEFC	230, 1Ph	2" x 2"	195	126
PF10CCE3	5	ODP	208-230/460, 3Ph	2" x 2"	195	126
PF10CCE3-T	5	TEFC	208-230/460, 3Ph	2" x 2"	195	126
PF15CCE3	7.5	ODP	208-230/460, 3Ph	3" x 3"	305	138
PF15CCE3-T	7.5	TEFC	208-230/460, 3Ph	3" x 3"	305	138
PF20CCE3	10	ODP	208-230/460, 3Ph	3" x 3"	400	138
PF20CCE3-T	10	TEFC	208-230/460, 3Ph	3" x 3"	400	138
PF25CCE3	15	ODP	208-230/460, 3Ph	3" x 3"	400	190
PF25CCE3-T	15	TEFC	208-230/460, 3Ph	3" x 3"	400	190



Power-Flo Pumps & Systems

a Power-Flo Technologies company

SELF PRIMING PUMPS

Frame Mount Pumps - PFCU/PFICU Series

MODEL	SIZE	MAX FLOW GPM	SHUT OFF HEAD
PF5CU	1-1/2" x 1-1/2"	125	104 FT
PF10ICU	2" x 2"	190	126 FT
PF15ICU	3" x 3"	309	133 FT
PF20ICU	3" x 3"	380	137 FT
PF25ICU	3" x 3"	440	182FT



Available in Flex Coupled or V-Belt (right hand, Left hand & in-line top mount) drive Assemblies

Self Primer Wet End Kits (WEKs) for Customer Supplied Motors

MODEL	DESCRIPTION	SUCTION	DISHARGE
PF4CCEWEK	POWERFLO PF4CCEWEK CI 2HP WET END KIT No Motor	1-1/2"	1-1/2"
PF5CCEWEK	POWERFLO PF5CCEWEK CI 3HP WET END KIT No Motor	1-1/2"	1-1/2"
PF10CCEWEK	POWERFLO PF10CCEWEK CI 5HP WET END KIT No Motor	2.0"	2.0"
PF15CCEWEK	POWERFLO PF15CCEWEK CI 7.5HP WET END KIT No Motor	3.0"	3.0"
PF20CCEWEK	POWERFLO PF20CCEWEK CI 10HP WET END KIT No Motor	3.0"	3.0"
PF25CCEWEK	POWERFLO PF25CCEWEK CI 15HP WET END KIT No Motor	3.0"	3.0"



Power-Flo Pumps & Systems

a Power-Flo Technologies company

END SUCTION PUMPS

Closed Coupled - PFCC Series

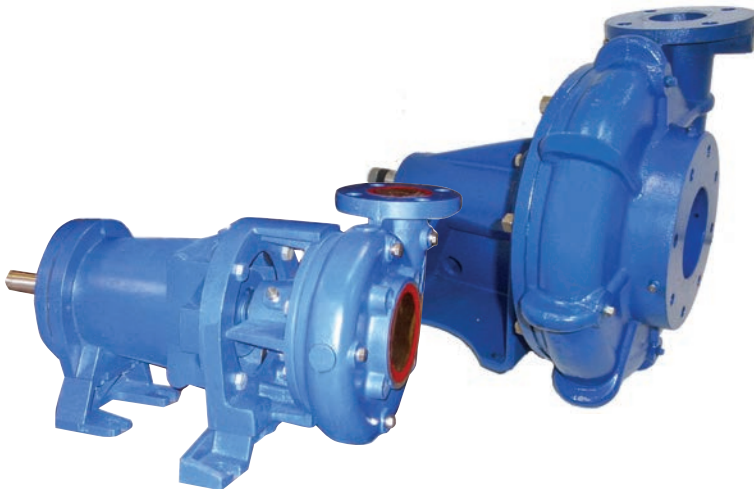


Cast Iron Stainless fitted close coupled pump for general pump service, pressure boosting, cooling towers, liquid transfer, marine and retrofit applications

Pump Body ASTM A48 Cast Iron
Impeller Stainless Steel
Working Pressure 175PSI

MODEL	SIZE	MAX FLOW GPM	SHUT OFF HEAD	IMPELLER	SPEED	Seal
PF2025CC7	2" x 2.5"	340	200 FT	STAINLESS	3500/1750RPM	MECAHNICAL SEAL
PF2530CC7	2.5 X 3"	540	160FT	STAINLESS	3500/1750RPM	MECAHNICAL SEAL
PF12515CC9	1.25" X 1.5" (NPT)	90	98FT	STAINLESS	1750RPM	MECAHNICAL SEAL
PF2025CC9	2" x 2.5"	370	400 FT	STAINLESS	3500/1750RPM	MECAHNICAL SEAL
PF3040CC9	3" x 4"	940	310 FT	STAINLESS	3500/1750RPM	MECAHNICAL SEAL
PF4050CC9	4" x 5"	1120	330 FT	STAINLESS	3500/1750RPM	MECAHNICAL SEAL

Frame Mounted - PFHCU/PFCU Series



MODEL	SIZE	MAX FLOW GPM	SHUT OFF HEAD
PF2020HCU	2" x 2"	162	265 FT
PF4030HCU	4" x 3"	700	340 FT
PF2025CU7	2" x 2.5"	340	200 FT
PF2530CU7	2.5"x 3"	540	160 FT
PF2025CU9	2" x 2.5"	370	400 FT
PF3040CU9	3" x 4"	940	310 FT
PF4050CU9	4" x 5"	1120	330 FT



Power-Flo Pumps & Systems

a Power-Flo Technologies company

WET END KITS & BOOSTER PUMPS

End Suction Wet End Kits (WEKs) for Customer Supplied Motors

MODEL	DESCRIPTION	SUCTION	DISHARGE
PF2025CC7-WEK-184JM	PF2025CC7-WEK-184JM Close Coupled Small Bore FOR 143JM TO 184JM Bracket SPECIFY 5"/5.75"/6.75" impeller	2-1/2"	2.0"
PF2025CC7-WEK-215JM	PF2025CC7-WEK-215JM Close Coupled Small Bore FOR 213JM TO 215JM Bracket SPECIFY 5"/5.75"/6.75" impeller	2-1/2"	2.0"
PF2025CC7-WEK-256JM	PF2025CC7-WEK-256JM Close Coupled LARGE Bore FOR 254JM TO 256JM Bracket SPECIFY 5"/5.75"/6.75" impeller	2-1/2"	2.0"
PF2530CC7-WEK-184JM	PF2530CC7-WEK-184JM Close Coupled Small Bore FOR 143JM TO 184JM Bracket SPECIFY 5.75"/6.75" impeller	2-1/2"	3.0"
PF2530CC7-WEK-215JM	PF2530CC7-WEK-215JM Close Coupled Small Bore FOR 213JM TO 215JM Bracket SPECIFY 5.75"/6.75" impeller	2-1/2"	3.0"
PF2530CC7-WEK-256JM	PF2530CC7-WEK-256JM Close Coupled LARGE Bore FOR 254JM TO 256JM Bracket SPECIFY 5.75"/6.75" impeller	2-1/2"	3.0"
PF2530CC7-WEK-326JM	PF2530CC7-WEK-326JM Close Coupled LARGE Bore FOR 284JM TO 256JM BRACKET SPECIFY 5.75"/6.75" impeller	2-1/2"	3.0"
PF2025CC9-WEK-184JM	PF2025CC9-WEK-184JM Close Coupled Small Bore FOR 143JM TO 184JM BRACKET SPECIFY 6.5"/7.5"/9.0" impeller	2-1/2"	2.0"
PF2025CC9-WEK-215JM	PF2025CC9-WEK-215JM Close Coupled Small Bore FOR 213JM TO 215JM BRACKET SPECIFY 6.5"/7.5"/9.0" impeller	2-1/2"	2.0"
PF2025CC9-WEK-256JM	PF2025CC9-WEK-256JM Close Coupled LARGE Bore FOR 254JM TO 256JM BRACKET SPECIFY 6.5"/7.5"/9.0" impeller	2-1/2"	2.0"
PF2025CC9-WEK-326JM	PF2025CC9-WEK-326JM Close Coupled LARGE BoreFOR 284JM TO 256JM BRACKET SPECIFY 6.5"/7.5"/9.0" impeller	2-1/2"	2.0"
PF3040CC9-WEK-184JM	PF3040CC9-WEK-184JM Close Coupled Small Bore FOR 143JM TO 184JM BRACKET SPECIFY 6.5"/7.00"/9.00" impeller	4.0"	3.0"
PF3040CC9-WEK-215JM	PF3040CC9-WEK-215JM Close Coupled Small Bore FOR 213JM TO 215JM BRACKET SPECIFY 6.5"/7.00"/9.00" impeller	4.0"	3.0"
PF3040CC9-WEK-256JM	PF3040CC9-WEK-256JM Close Coupled Large Bore FOR 254JM TO 284M BRACKET SPECIFY 7.00"/8.00"/9.00" impeller	4.0"	3.0"
PF3040CC9-WEK-326JM	PF3040CC9-WEK-326JM Close Coupled Large Bore FOR 284JM TO 326JM BRACKET SPECIFY 7.00"/8.00"/9.00" impeller	4.0"	3.0"
PF4050CC9-WEK-184JM	PF4050CC9-WEK-184JM Close Coupled Small Bore FOR 143JM TO 184JM BRACKET SPECIFY 7.00"/8.00"/9.00" impeller	5.0"	4.0"
PF4050CC9-WEK-215JM	PF4050CC9-WEK-215JM Close Coupled Small Bore FOR 213JM BRACKET TO 215JM SPECIFY 7.00"/8.00"/9.00" impeller	5.0"	4.0"
PF4050CC9-WEK-256JM	PF4050CC9-WEK-256JM Close Coupled Large Bore FOR 254JM TO 256JM BRACKET SPECIFY 7.00"/8.00"/9.00" impeller.	5.0"	4.0"
PF4050CC9-WEK-326JM	PF4050CC9-WEK-326JM Close Coupled Large Bore FOR 284JM TO 324JM BRACKET SPECIFY 7.00"/8.00"/9.00" impeller	5.0"	4.0"

Booster Pumps - PFHM Series



NSF-61 Booster pump

- Pump** Stainless
- Impeller** Stainless
- Motor** Inverter Duty for VFD use
- Packaged Systems** Complete simplex, duplex, triplex package systems for constant pressure applications
- Booster Service** 50home/750 fixture units

MODEL	HP	Hz	VOLT/PH	RPM	AMPS	STAGES	SUCTION	DISHARGE	MAX FLOW GPM	SHUT OFF HEAD
PFHM613-1	1.3	60	115-230/1	3600	12.7/6.4	6	1"NPT	1"NPT	24	240
PFHM330-1	3	60	230/1	3600	14	3	1 1/2"NPT	1 1/2"NPT	70	220
PFHM330-3	3	60	230-460/3	3600	14.2/8.3	3	1 1/2"NPT	1 1/2"NPT	70	220
PFHM340-3	4	60	230-460/3	3600	11.7/5.5	3	1-1/2"NPT	1-1/2"NPT	65	250



Power-Flo Pumps & Systems

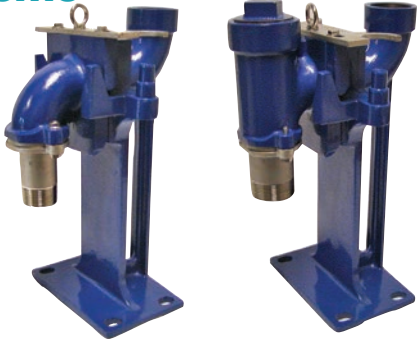
a Power-Flo Technologies company

ACCESSORIES

Base Elbows for Rail Systems

- Ductile iron construction
- Powder coated for corrosion resistance
- Stainless steel upper and lower guide brackets standard
- Compact design for easy installation
- Slide couplings with check valve on 1¼", 1½", 2"

Stainless Intermediates and stainless lifting chain kits also available



PF125, 150, 200, 300SC

PF125, 150, 200SCV



PF400SC, PF600SC & PF800SC

Model No	SIZE M = Male, F = Female	with Check Valve	Max Pump Weight	Guide Rail Pins to accept
PF125SC	1¼" NPTM x 2" NPTF	PF125SCV	200 lbs	3/4" & 1"
PF150SC	1½" NPTM x 2" NPTF	PF150SCV	200 lbs	3/4" & 1"
PF200SC	2" NPTM x 2" NPTF	PF200SCV	200 lbs	3/4" & 1"
PF300SC	3" NPTM x 3" NPTF	--	400 lbs	3/4", 1" 1¼"
PF400SC	4" x 4" ANSI Flanges	--	2000 lbs	2"
PF600SC	6" x 6" ANSI Flanges	--	2000 lbs	2"
PF800SC	8" x 8" ANSI Flanges	--	4000 lbs	2" & 3"

Indoor/Outdoor High Water Alarms



NEMA 3R Indoor/Outdoor Alarm - P/N: PF-HWA & PF-HWA15

Designed to sound an 85 db @ 10 feet audible alarm and illuminate a red beacon to notify an alarm situation. Equipped with "power on" light, test switch and horn/silence with auto reset.

PF-HWA15 - Includes mechanical float with 15 ft cord.

PF-HWA - Does not come with a float. SGMNO float must be ordered separately, available in variety of lengths.



Power-Flo Pumps & Systems

a Power-Flo Technologies company

ACCESSORIES

Pipe Mounted Level Controls



PUMP DOWN APPLICATION					
PF15PMSPDT	15 Ft	PF20PMSPDT	20 Ft		
PF15PMPD1WP	15 Ft	PF20PMPD1WP	20 Ft		
PF15PMPD2WP	15 Ft	PF20PMPD2WP	20 Ft	PF50PMPD1WP	50 Ft
PF15PMPDWOP	15 Ft	PF20PMPDWOP	20 Ft	PF25PMPDWOP	25 Ft
PF17A43*	15 Ft			PF30PMPDWOP	30 Ft

* For High Temperature Application; 200°F, up to 1/2 Hp, 1 Phase, 115 VAC, 13 amps, with piggy-back plug
 D = Pump Down, 1 = 120 VAC, 2 = 230 VAC, WP = With Plug, WOP = With Out Plug

Wide Angle Mechanical Level Controls are constructed of high impact corrosion resistant PVC housing, heavy-duty contacts with flexible SJOW, water-resistant cable with or without piggy-back plug. For pipe mounted applications.

PMSPDT, (Single Pole Double Throw) pump down or pump up series - designed for direct control of pumps up to 1/2 Hp, 1 Phase, 60 Hz. at 120 VAC, or 1Hp or less at 230 VAC. Can be wired for either N.O. (normally Open), pump down or N.C. (Normally Closed), pump up. Max. pump run current 13 amps, Max. pump start current 85 amps. Pumping range from 7 to 36 inches. 16 gauge, 2 conductor cable.

PMPD, pump down series - designed for direct control of pumps up to 3/4 Hp, 1 Phase, 60 Hz. at 120 VAC, or 2Hp or less at 230 VAC, Max. pump run current 15 amps, Max. pump start current 85 amps. Pumping range from 7 to 36 inches. 14 gauge, 2 conductor cable.

Narrow Angle, Pilot Duty Level Controls

NORMALLY OPEN PART NO.	CORD LENGTH
PF15SGMNO	15 Ft
PF20SGMNO	20 Ft
PF30SGMNO	30 Ft
PF50SGMNO	50 Ft



Narrow Angle Mechanical Level Controls are constructed of high impact corrosion resistant polypropylene housing rated for 140°F with snap action contacts and 18 gauge, 2 conductor, SJOW water-resistant cord. Control differential of 1.5 inches above or below horizontal. Maximum water depth of 30 feet, 13 psi. 5 amp, 125/250vac rating.

SGMNO series, Designed to activate pump control panels and alarms. **Normally Open (NO), High Level**, turns on (closes) when the float tips slightly **above** horizontal, signaling a high level, and turns off (open) when the float drops slightly **below** horizontal.



Power-Flo Pumps & Systems

a Power-Flo Technologies company

CONTROL PANELS

Standard Control Panels



Features:

For 115/200-230 Volt, 1 Phase & 200-230/460 Volt, 3 Phase - 1/3 to 60HP

- NEMA 4X enclosure, Fiberglass w/External Mounting Feet
- Stainless door latches with padlock hasp
- Pump run light, one per pump
- "Hand-Off-Auto" toggle switch, one per pump
- Aluminum Sub Plate for Switch and Light mounting
- 3 Pole, IEC Contactors
- Motor Circuit Breakers
- Control Circuit Breakers
- Flashing Red Alarm Light
- High decibel Audible Alarm
- Alarm "On/Off/Test" toggle switch
- Raised Field wiring terminal strip
- UL 508A Listing

HP	Volts/Ph	Simplex	Duplex
0.5	230/3	PF1004	PF2004
0.5	460/3	PF1005	PF2005
0.75, 1	230/3	PF1014	PF2014
0.75, 1	460/3	PF1015	PF2015
2.0	200/1	PF1021	PF2021
2.0	200/1	PF1021-C	PF2021-C
1.5, 2.0	230/1	PF1023	PF2023
2.0	230/1	PF1023-C	PF2023-C
2.0	200/3	PF1022	PF2022
1.5, 2.0	230/3	PF1024	PF2024
1.5, 2.0	460/3	PF1025	PF2025
3	230/1	PF1033-C	PF2033-C
2.8, 3	230/1	PF1033	PF2033
3	208/3	PF1032	PF2032
2.8, 3	230/3	PF1034	PF2034
2.8, 3	460/3	PF1035	PF2035

HP	Volts/Ph	Simplex	Duplex
3.7	230/1	PF1043	PF2043
3.7	208/3	PF1042	PF2042
3.7	230/3	PF1044	PF2044
3.7	460/3	PF1045	PF2045
4.5, 5	230/1	PF1053-C	PF2053-C
4.5, 5	230/1	PF1053	PF2053
4.5, 5	208/3	PF1052	PF2052
4.5, 5	230/3	PF1054	PF2054
4.5, 5	460/3	PF1055	PF2055
7.5	230/1	PF1083-C	PF2083-C
7.5	230/1	PF1083	PF2083
7.5	230/3	PF1084	PF2084
7.5	208/3	PF1082	PF2082
7.5	460/3	PF1085	PF2085
9	230/3	PF1094	PF2094
9	460/3	PF1095	PF2095

HP	Volts/Ph	Simplex	Duplex
11.3	208/3	PF1122	PF2122
11.3, 12	230/3	PF1124	PF2124
11.3, 12	460/3	PF1125	PF2125
13	230/3	PF1134	PF2134
13	460/3	PF1135	PF2135
15	230/3	PF1154	PF2154
15	460/3	PF1155	PF2155
18	230/3	PF1184	PF2184
18	460/3	PF1185	PF2185
24	230/3	PF1244	PF2244
24	460/3	PF1245	PF2245
30	230/3	PF1304	PF2304
30	460/3	PF1305	PF2305
36	230/3	PF1364	PF2364
36	460/3	PF1365	PF2365
48	460/3	PF1485	PF2485
60	460/3	PF1605	PF2605



Power-Flo Pumps & Systems

a Power-Flo Technologies company

CROSS REFERENCE CHART

POWER-FLO MODEL	HP	DESCRIPTION	BARNES	BARMESA	LIBERTY	LITTLE GIANT	MYERS	GOULDS	HYDRAMATIC	ZOELLER
RESIDENTIAL/INSTALLER SUMP & SEWAGE										
PFS601	1/3	SUMP 1/4" SOLIDS MAX 60GPM, 28FT WITH FLOAT	ESB33 SP33	BP33	37	SP33 ESP33 6EN ES33	MS33 MDC33	EP-04 GSP-03	HP33 SHEF30 HS33 VS33	53, 55, 57
PFS721	1/2	SUMP 1/4" SOLIDS MAX 72GPM, 30FT WITH FLOAT	SP50 EP52	BP50	280	8-SERIES ESP50	MS50 MDC50	EP-05 GSP-05 ST51	HP50 HS50 SHEF40	76 153 198
PFSW081	1/2	SEWAGE 2" SOLIDS MAX 108GPM, 18FT WITH FLOAT	N/A	2SVEN-051	280	6-CIA 9SN	ME45 MSE50	PS41 PS51 3872 3886- WS03	SKV40 SKV50	76
PFSW451	3/4	SEWAGE 2" SOLIDS MAX 145GPM, 20FT WITH FLOAT	70 EP72X	N/A	290 LE70	10SN WSV52	MW50	3886-WS07	SP40 SP50	260
PFSW452	3/4	SEWAGE 2" SOLIDS MAX 145GPM, 20FT WITH FLOAT	71 EP72X	N/A	290 LE70	10SN WSV52	MW50	3886-WS07	SP40 SP50	260
ENGINEERED EFFLUENT										
PFSTEP512	1/2	HIGH HEAD EFFLUENT 3/4" SOLIDS MAX 76GPM, 79FT	STEP512	BPSTEP	FL50 281	10EN 10ENH 14EH WSV50	ME50 ME75	3885 WE05HH WE07H	OSP50 SHEF50 SPD50	N145 N163 N4163 M137
PFEV512	1/2	EFFLUENT 3/4" SOLIDS MAX 62GPM, 49FT	EHV412 BP31 SP50	BPEV512 2SVEN-051	250 280	6EN 9EN 9ENH ESP50	ME45 MEOSP50	PE51 3885 WE05H WE03M	SHEF45 SHEF40	N140 N4140
PFCEH1024	1	HIGH HEAD EFFLUENT 3/4" SOLIDS MAX 120GPM, 74FT	EH1022L STEP1022SS	BPSTEP1022 2SVEN-101	FL100	16EH WS50H WS100H	ME100	3885 WE10H	SHEF100 SPD100	N161 N165 N4161 N4165
NOTE: CROSS OVER CHART FOR REFERENCE ONLY CONSULT FACTORY FOR DIMENSIONAL AND HYDRALUIC FIT. VERIFY ALL ELECTRICAL AND CONTROL INFORMATION BEFORE ORDERING ANY PUMP.										



Power-Flo Pumps & Systems

a Power-Flo Technologies company

CROSS REFERENCE CHART

POWER-FLO MODEL	HP	DESCRIPTION	BARNES	BARMESA	LIBERTY	LITTLE GIANT	MYERS	GOULDS	HYDROMATIC	ZOELLER
ENGINEERED SEWAGE EJECTOR										
PFS411	4/10	SEWAGE 2" SOLIDS MAX 116GPM, 25FT 2" NPT DISCHARGE	SE411	2BSE411	LE40	9SN	SRM4P-1	N/A	SKV40AW SP40A1	264
PFS411HT	4/10	HIGH TEMP SEWAGE 2" SOLIDS MAX 116GPM, 25FT 2" NPT DISCHARGE	SE411-HT	N/A	HT41	HT-6E	S40HT	2EC-HT	HTS33	BN2057
PFV512	1/2	VORTEX SEWAGE 2" SOLIDS MAX 82GPM, 22FT 2" NPT DISCHARGE	SEV511	2SEV512	N/A	WSV52		N/A		212
PFSE51	1/2	SEWAGE 2" SOLIDS 160GPM, 25FT 2" OR 3" NPT DISCHARGE	3SE51-DS SEV412 2SEV514L	2BSE51 2BSE5	LE50	10SN 14S WS51 WS52	WHR-5 MW-50 MKS-50	WS051B/BF 2WD-DA GSD	SP50A1 SKV50AW1 SK50A1 SKHS50M1	267 282
PFSE51HT	1/2	HIGH TEMP SEWAGE 2" SOLIDS MAX 116GPM, 25FT 2" OR 3" NPT DISCHARGE	SE51-HT	N/A	HT450	HT-10EN	S50HT	N/A	HTS50	BN2098
PFSE7	3/4	SEWAGE 2" SOLIDS 190GPM, 30FT 2" OR 3" NPT DISCHARGE	3SE7-DS SE7-L 2SEV724L	N/A	LE70	N/A	WHR-7 MKS-75	WS071 2WD-CA	SK75M2 SK60A1	N/A
PFSE10	1	SEWAGE 2" SOLIDS 220GPM, 38FT 2" OR 3" NPT DISCHARGE	3SE10-DS	3BSE10	LE100	16S	WHR10 MW100 3MW100 MWS9-100	WS101 2WD-BA	SK100M2 SKHS100M2	284 270
PFSE15	1.5	SEWAGE 2-1/2" SOLIDS MAX 375GPM, 41FT 2" OR 3" NPT DISCHARGE	3SE15-DS	3BSE15	N/A	N/A	3MW15 MWS9-150	WS1512BHF 3SD-EA (HORIZONTAL DISCHARGE) LDL1512	SKHS150M2	F620
PFSE20	2	SEWAGE 2-1/2" SOLIDS MAX 410GPM, 52FT 2" OR 3" NPT DISCHARGE	3SE20-DS	3BSE20	N/A	20S-CIM	3MW-20 MWS9-200	WS2012BHF 3SD-CA (HORIZONTAL DISCHARGE) LDL2032	S3BS200 SKHS200M2	N/A
PFSE30	3	SEWAGE 2-1/2" SOLIDS 435GPM, 52FT 2" OR 3" NPT DISCHARGE	3SE30-DS	3BSE30	N/A	N/A	3MW30	3SD-BA (HORIZONTAL DISCHARGE)	S3BS300	F630
PFCSEH20	2	HIGH HEAD SEWAGE 1-1/2" SOLIDS 160GPM, MAX 78FT 2" OR 3" NPT DISCHARGE	2SEV20-DS	N/A	N/A	N/A	MW200	VTX20	N/A	N/A
PFCSEH30	3	HIGH HEAD SEWAGE 1-1/2" SOLIDS 180GPM, MAX 96FT 2" OR 3" NPT DISCHARGE	N/A	N/A	N/A	N/A	N/A	N/A	N/A	N/A
PFSEB15	1.5	HIGH HEAD BLADELESS SEWAGE 2" SOLIDS 275GPM, 60FT 3" NPT DISCHARGE	2SEV15-DS 3SE15-L	N/A	LEH-150 LSS-150	WS102 18S	MW150 WHRH-10 3RMW15	VTX15	S3W150	293
PFSEB20	2	HIGH HEAD BLADELESS SEWAGE 2" SOLIDS 310GPM, MAX 70FT 3" NPT DISCHARGE	2SEV20-L 3SE20-L	N/A	LEH-200 LSS-200	20S	WHRH-20 3RMW20	VTX20	S3W200	294
PFSEB30	3	HIGH HEAD BLADELESS SEWAGE 2" SOLIDS MAX 325GPM, 90FT 3" NPT DISCHARGE	3SE30-L	N/A	LSS300	N/A	3RH30 3RH50 3RMW30	N/A	S3W300	295

NOTE: CROSS OVER CHART FOR REFERENCE ONLY CONSULT FACTORY FOR DIMENSIONAL AND HYDRAULIC FIT. VERIFY ALL ELECTRICAL AND CONTROL INFORMATION BEFORE ORDERING ANY PUMP.



Power-Flo Pumps & Systems

a Power-Flo Technologies company

CROSS REFERENCE CHART

POWER-FLO MODEL	HP	DESCRIPTION	BARNES	BARMESA	LIBERTY	LITTLE GIANT	MYERS	GOULDS	HYDROMATIC	ZOELLER
ENGINEERED SOLIDS HANDLING										
PFC4NC45	4.5	TWO-VANE SOLIDS HANDLING 4" 125LB ANSI FLANGED DISCHARGE 3" SOLIDS MAX 600GPM, 40FT DUAL SEAL WITH SEAL LEAK & OVER TEMP SENSORS	4SE45-L	4BSE45	LSS500	N/A	4V50 4WHV50 MS4-500	4SD-50	S4N500	4404 4405
PFC4NC75	7.5	TWO-VANE SOLIDS HANDLING 4" 125LB ANSI FLANGED DISCHARGE 3" SOLIDS MAX 700GPM, 50FT DUAL SEAL WITH SEAL LEAK & OVER TEMP SENSORS	4SE75-L	4BSE75	N/A	N/A	4V75 4VHS75 4WHV75 MS4-750	4NS-7.5 4SD-7.5	S4N750	N/A
PFC4NC113	11.3	TWO-VANE SOLIDS HANDLING 4" 125LB ANSI FLANGED DISCHARGE 3" SOLIDS MAX 875GPM, 80FT DUAL SEAL WITH SEAL LEAK & OVER TEMP SENSORS	4SE113-L	4BSE113	N/A	N/A	4V100 4VHS100 4WHV100	4NS-10.0 4GFK-10.0	S4M1000 S4L1000	N/A
PFC4NC150	15	TWO-VANE SOLIDS HANDLING 6" 125LB ANSI FLANGED DISCHARGE 3" SOLIDS MAX 1600GPM, 100FT DUAL SEAL WITH SEAL LEAK & OVER TEMP SENSORS	4SE150-L	4BSE150	N/A	N/A	4VC150	4NS-15.0 4GFK-20	S4M1500 S4L1500	N/A
PFC6NC180	18	TWO-VANE SOLIDS HANDLING 6" 125LB ANSI FLANGED DISCHARGE 3" SOLIDS MAX 1600GPM, 105FT DUAL SEAL WITH SEAL LEAK & OVER TEMP SENSORS	6SE180-L	6BSE180	N/A	N/A	6VC200	N/A	S6L2000	N/A
PFC6NC240	24	TWO-VANE SOLIDS HANDLING 6" 125LB ANSI FLANGED DISCHARGE 3" SOLIDS MAX 1600GPM, 120FT DUAL SEAL WITH SEAL LEAK & OVER TEMP SENSORS	6SE240-L	6BSE240	N/A	N/A	6VC250	N/A	S6L2500	N/A
PFC6NC300	30	TWO-VANE SOLIDS HANDLING 6" 125LB ANSI FLANGED DISCHARGE 3" SOLIDS MAX 200GPM, 125FT DUAL SEAL WITH SEAL LEAK & OVER TEMP SENSORS	6SE300-L	6BSE300	N/A	N/A	6VC300	N/A	S6L3000	N/A
PFC6NC360	36	TWO-VANE SOLIDS HANDLING 6" 125LB ANSI FLANGED DISCHARGE 3" SOLIDS MAX 1600GPM, 140FT DUAL SEAL WITH SEAL LEAK & OVER TEMP SENSORS	6SE360-L	6BSE360	N/A	N/A	6VC400	N/A	S6L4000	N/A
PFC6NC480	48	TWO-VANE SOLIDS HANDLING 6" 125LB ANSI FLANGED DISCHARGE 3" SOLIDS MAX 2000GPM, 150FT DUAL SEAL WITH SEAL LEAK & OVER TEMP SENSORS	6SE480-L	6BSE480	N/A	N/A	6VC500	N/A	S6A5000	N/A
PFC6NC600	60	TWO-VANE SOLIDS HANDLING 6" 125LB ANSI FLANGED DISCHARGE 3" SOLIDS MAX 2200GPM, 160FT DUAL SEAL WITH SEAL LEAK & OVER TEMP SENSORS	6SE600-L	6BSE600	N/A	N/A	6VC600	N/A	N/A	N/A
PFC6NC90-6	9	1150RPM TWO-VANE SOLIDS HANDLING 6" 125LB ANSI FLANGED DISCHARGE 3" SOLIDS MAX 1200GPM, 60FT DUAL SEAL WITH SEAL LEAK & OVER TEMP SENSORS	6SE90-6L	6BSE90-6	N/A	N/A	6VC100-M6	N/A	S6L1000-M6	N/A
PFC6NC120-6	12	1150RPM TWO-VANE SOLIDS HANDLING 6" 125LB ANSI FLANGED DISCHARGE 3" SOLIDS MAX 1400GPM, 70FT DUAL SEAL WITH SEAL LEAK & OVER TEMP SENSORS	6SE120-6L	6BSE120-6	N/A	N/A	6VC150-M6	N/A	S6L1500-M6	N/A

NOTE: CROSS OVER CHART FOR REFERENCE ONLY CONSULT FACTORY FOR DIMENSIONAL AND HYDRALUIC FIT. VERIFY ALL ELECTRICAL AND CONTROL INFORMATION BEFORE ORDERING ANY PUMP.



Power-Flo Pumps & Systems

a Power-Flo Technologies company

CROSS REFERENCE CHART

POWER-FLO MODEL	HP	BARNES	BARMESA	LIBERTY	LITTLE GIANT	MYERS	GOULDS	HYDROMATIC	ASHLAND	ZOELLER
GRINDER										
PFG200-21	2HP AUTOMATIC INTERNAL CAPACITOR	PGPP2022 ZOGV20-AU	N/A	LSG202 PRG102A	GP-A200	MG200-21 VR2-21	AGS RGS2012	HPGR200	N/A	WD620-B
PFG20HV	HIGH VOLUME 2HP EXTERNAL CAPACITOR	SGVF20 ZSGV20	BGP20	LSG202-C	GP-M200	MG20 WGL- 20 VS-20	1GD	HPGR HV200	AGP-HC200	W6820
PFG20HH	HIGH HEAD 2HP EXTERNAL CAPACITOR	SGVH20 ZOGP20	BGP20	LSGX202-C	GP-M200	MG20H WGL-20H VH20	N/A	HPG HVH200	N/A	6840
PFG30	3HP	SGV30 NGV30	BGP30	N/A	N/A	WG30	1GA7	HPG300	AGP-300	7110
PFG50	5HP	SGV50 NGV50	BGP50	N/A	N/A	WG50	1GA8 2GA8	HPG500	AGP-500	7111
PFG75	7.5HP	SGV75 NGV75	BGP75	N/A	N/A	WG75	2GA3	HPG750	AGP-750	7112
DECORATIVE WATER										
PFU31	1/3HP	SFU31	N/A	N/A	NA	N/A	N/A	N/A	N/A	N/A
PFU51	1/2HP	SFU51	N/A	N/A	NA	N/A	N/A	N/A	N/A	N/A
PFU71	3/4HP	SFU71	N/A	N/A	NA	N/A	N/A	N/A	N/A	N/A
PFU102	1 HP	SFU102	N/A	N/A	NA	N/A	N/A	N/A	N/A	N/A
NOTE: CROSS OVER CHART FOR REFERENCE ONLY CONSULT FACTORY FOR DIMENSIONAL AND HYDRALUIC FIT. VERIFY ALL ELECTRICAL AND CONTROL INFORMATION BEFORE ORDERING ANY PUMP.										



Power-Flo Pumps & Systems

a Power-Flo Technologies company

CROSS REFERENCE CHART

POWER-FLO MODEL	DESCRIPTION	HP	BARNES/BURKS	BARMESA	AURORA	GORMAN- RUPP/AMT	GOULDS/MARLOW
SELF-PRIMING							
PF3CCE3	CLOSE COUPLED SELF PRIMING 1-1/2" X 1-1/2" 3/8" SOLIDS Max 95GPM, 87FT.	1.5	3CCE3	BSP3CCE		282/276	M2P1-C M2P2
PF4CCE3	CLOSE COUPLED SELF PRIMING 1-1/2" X 1-1/2" 3/8" SOLIDS Max 105GPM, 96FT.	2.0	4CCE	BSP4CCE		282/276	M2P1-B
PF5CCE3	CLOSE COUPLED SELF PRIMING 1-1/2" X 1-1/2" 3/8" SOLIDS Max 130GPM, 110FT.	3.0	5CCE	BSP5CCE		282/276	M2P1-A 30SPM
PF10CCE3	CLOSE COUPLED SELF PRIMING 2" X 2" 1/2" SOLIDS Max 195GPM, 126FT.	5.0	10CCE	BSP10CCE		287	M2P2-A M3P1 50SPM
PF15CCE3	CLOSE COUPLED SELF PRIMING 3" X 3" 3/4" SOLIDS Max 305GPM, 138FT.	7.5	15CCE	BSP15CCE		287	M2P3 M3P2
PF20CCE3	CLOSE COUPLED SELF PRIMING 3" X 3" 3/4" SOLIDS Max 400GPM, 138FT.	10	20CCE	BSP20CCE		4871	M2P4-C/D/E
PF25CCE3	CLOSE COUPLED SELF PRIMING 3" X 3" 3/4" SOLIDS Max 400GPM, 190FT.	15	25CCE	BSP25CCE		4872	M2P4-A/B M3P4-C/D/E
PF5CU	CLOSE COUPLED SELF PRIMING 1-1/2" X 1-1/2" 3/8" SOLIDS Max 125GPM, 104FT.	CF	5CU	BSP5CU			N/A
PF7CU	CLOSE COUPLED SELF PRIMING 2" X 2" 3/8" SOLIDS Max 137GPM, 104FT.	CF	7CU	BSP7CU			N/A
PF10ICU	CLOSE COUPLED SELF PRIMING 2" X 2" 1/2" SOLIDS Max 190GPM, 126FT.	CF	10ICU	BSP10ICU			N/A
PF15ICU	CLOSE COUPLED SELF PRIMING 3" X 3" 3/4" SOLIDS Max 309GPM, 133FT.	CF	15ICU	BSP15ICU			N/A
PF20ICU	CLOSE COUPLED SELF PRIMING 3" X 3" 3/4" SOLIDS Max 380GPM, 137FT.	CF	20ICU	BSP20ICU			N/A
PF25ICU	CLOSE COUPLED SELF PRIMING 3" X 3" 3/4" SOLIDS Max 440GPM, 182FT.	CF	25ICU	BSP25ICU			N/A

NOTE: CROSS OVER CHART FOR REFERENCE ONLY CONSULT FACTORY FOR DIMENSIONAL AND HYDRALUIC FIT. VERIFY ALL ELECTRICAL AND CONTROL INFORMATION BEFORE ORDERING ANY PUMP.



Power-Flo Pumps & Systems

a Power-Flo Technologies company

CROSS REFERENCE CHART

POWER-FLO MODEL	DESCRIPTION	HP	BARNES/BURKS	BARMESA	AURORA	GORMAN-RUPP/AMT	GOULDS/MARLOW
END SUCTION							
PF2025CU7	CLOSE COUPLED OR FRAME MOUNTED END SUCTION 2" DISCHARGE x2-1/2" SUCTION. MAX 385GPM, 200FT. CAST IRON STAINLESS FITTED.	CF	G6-1-1/2 G6-2		340, 2x2.5x7A	315X	3656 4AI/BF
PF2530CU7	CLOSE COUPLED OR FRAME MOUNTED END SUCTION 2-1/2" DISCHARGE X 3" SUCTION. MAX 460GPM, 190FT. CAST IRON STAINLESS FITTED.	CF	G6-2-1/2 G9-2-1/2		340A, 2.5x3x7B	4250 4251	3656 7AI/BF
PF12515CU9	CLOSE COUPLED ONLY END SUCTION NPT 1-1/4" DISCHARGE x 1-1/2" SUCTION. MAX 90GPM, 98FT. CAST IRON STAINLESS FITTED. 1750RPM ONLY	CF	4G6-1-1/2		340A, 1.25X1.5X9B	4201-95	3642 2BF/AI
PF2025CU9	CLOSE COUPLED OR FRAME MOUNTED END SUCTION 2" DISCHARGE x2-1/2" SUCTION. MAX 370GPM, 400FT. CAST IRON STAINLESS FITTED.	CF	4G7-2 4G7A-2 G9A-2-1/2		340A, 2x2.5x9	4271 4272	3656 21AI/BF
PF3040CU9	CLOSE COUPLED OR FRAME MOUNTED END SUCTION 3" DISCHARGE x 4" SUCTION. MAX 980GPM, 310FT. CAST IRON STAINLESS FITTED.	CF	G7-2-1/2 G9-3F G9A-3F		340A, 3x4x9A	4281-95 4282-95	3656 16AI/BF
PF4050CU9	CLOSE COUPLED OR FRAME MOUNTED END SUCTION 4" DISCHARGE x 5" SUCTION. MAX 1115GPM, 330FT. CAST IRON STAINLESS FITTED.	CF	4G9-4F			340A, 4x5x9A	3656 10AI/BF 12AI/BF
HORIZONTAL MULTI-STAGE							
PFHM613-1	HORIZONTAL MULTI-STAGE NSF-61 WATER BOOSTER PUMP. CLOSE COUPLED 1.3HP 230/115V 1PH. MAX 24GPM, 240FT	1.3					1HM02-08
PFHM330-1	HORIZONTAL MULTI-STAGE NSF-61 WATER BOOSTER PUMP. CLOSE COUPLED 3HP 230/115V 1PH. MAX 70GPM, 225T	3					5HM02-06 10HM01-04
PFHM330-3	HORIZONTAL MULTI-STAGE NSF-61 WATER BOOSTER PUMP. CLOSE COUPLED 3HP 208/230/460V 3PH FOR USE WITH VFD. MAX 70GPM, 225FT	3					5HM02-06 10HM01-04
PFHM340-3	HORIZONTAL MULTI-STAGE NSF-61 WATER BOOSTER PUMP. CLOSE COUPLED 4.0HP 208/230/460V 3PH FOR USE WITH VFD. MAX 65GPM, 250FT	4					10HM05
NOTE: CROSS OVER CHART FOR REFERENCE ONLY CONSULT FACTORY FOR DIMENSIONAL AND HYDRAULIC FIT. VERIFY ALL ELECTRICAL AND CONTROL INFORMATION BEFORE ORDERING ANY PUMP.							



Power-Flo Pumps & Systems

a Power-Flo Technologies company

SOLUTIONS



Power-Flo Pumps & Systems stocks key items which support motor control requirements. From take-off, engineering design, submittal drawings to on time fabrication, delivery and start-up. Power-Flo Pumps & Systems has the capability to meet any customer requirement.

Our fabrication facility also engineers and designs custom motor controls and related panels for municipal and public projects.

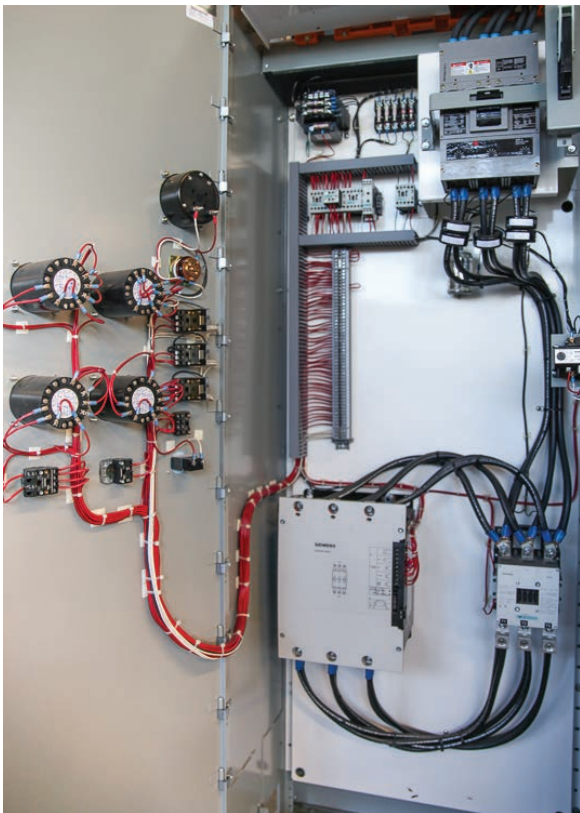
ENGINEERING SOLUTIONS

- Motor Control Centers
- Automatic Transfer Switches 150A-2000A
- Variable Frequency Drives with By-pass Panel
- Wye-Delta, Part-Winding, Auto Transformers
- Reduced Voltage Starters
- Two-Speed Nema Rated Starters
- IEC and Nema Rated Starters
- Control Stations
- Nema 1, Nema 3R, Nema 12 and Nema 4X
- Enclosures - ALL IN STOCK
- PLC's & Automation Products
- Industrial and Plug-in Relays
- Pilot Devices, 30MM & 22MM



CUSTOM PANEL SOLUTIONS

Power-Flo Pumps & Systems Custom Panel Shop is a UL508 recognized builder of custom Control Panels in the United States and Canada. The UL label assures that the control panels are manufactured to meet all requirements of Underwriters Laboratories, including the use of all UL labeled components.



Power-Flo Pumps & Systems

a Power-Flo Technologies company



Power-Flo Technologies

Supplies, Services, Solutions

270 Park Avenue

New Hyde Park, NY 11040

www.powerflotechnologies.com